

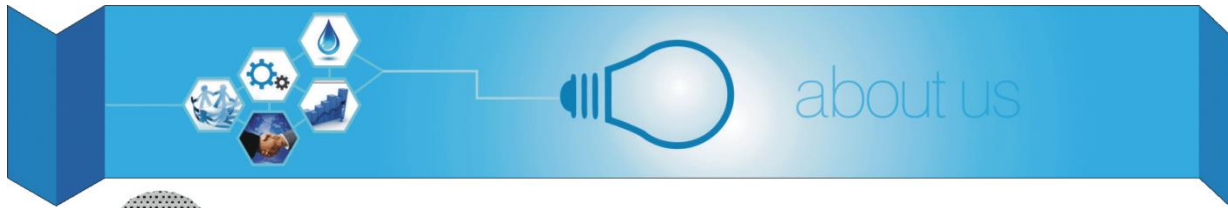


**SHREE SHYAM PERFORATORS**

## Product Catalogue

:

 [Shreeshyamperforators/](#)  
 [www.perforatedsheet.in/](http://www.perforatedsheet.in/)  
 [Prathvirajjangid@gmail.com](mailto:Prathvirajjangid@gmail.com)  
 9370029298 / 9834623362



We, "Shree Shyam Perforators" are leading manufacturer and supplier of superior quality array of Perforated Sheet, Wire Mesh, Welded Mesh, Demister Pad and Expanded Metal. Since our inception in 2010 at Pune (Maharashtra, India), we are supported by huge infrastructural base that comprises various departments such as procurement, manufacturing, quality control, sales & marketing and warehousing & packaging. All these departments are resourced with all the requisite facilities that allow us to manufacture durable range of products. Under the management of our Proprietor "Mr. Prathiviraj Jangid,"



We have deployed adept team of professional, who work in cohesive manner with one another and with clients in order to fulfill their diverse requirements. Our modern manufacturing facility is simply the best in the industry. Having the most efficient team of professionals and superior quality machines we are committed to give you the best results.

We have constructed an advanced quality control department outfitted with modern testing equipment in order to rigorously test products on defined quality parameters. Our marketing and sales executives assure that the entire product range is delivered to clients within stipulated time frame. Also, our professional team includes procurement agents, production managers, quality controllers, storekeepers, sales & marketing executives, etc.



- ▶ Our organization has attained indomitable position in the market by providing qualitative range of products in various specifications.
- ▶ Due to the following reasons, we have been able to carve niche in this domain
- ▶ Huge infrastructural base
- ▶ Strict quality policy
- ▶ Client centric approach
- ▶ Ethical business policies
- ▶ Wide distribution network
- ▶ Timely delivery
- ▶ Best skilled professionals

**Each hole speaks the same language in our products.  
The language of 'Total Quality'.**



**Contact Us**

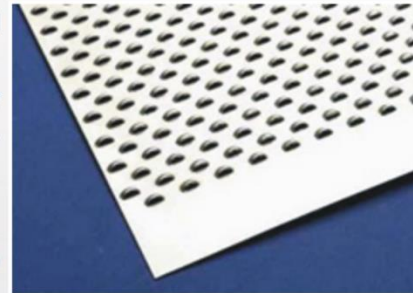
Have any Query ? Feel free to Cotact Us



# Our Products

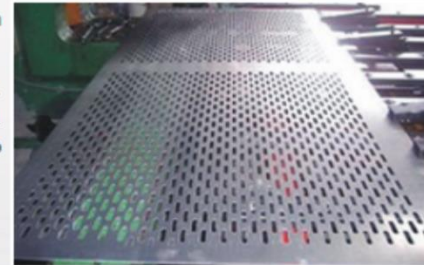
## Perforated Sheets / Coils:

- > Standard dimensions perforated sheets / coils majorly in stainless steel are the major part of our productions.
- > Thickness ranging from 0.5mm to 3mm thick in standard sheet sizes of 4' x 8' or in coils of 1 mtr, 1.25 mtrs or 1.5mtrs are always available ex-stock
- > Standard hole pitch patterns are generally ex-stock
- > Non-standard hole pitch patterns can be developed as per demand in the shortest time
- > Smaller width coils (Perforated Strips) can be punched as per the required hole-pitch patterns, leaving margins as suggested by the customer.



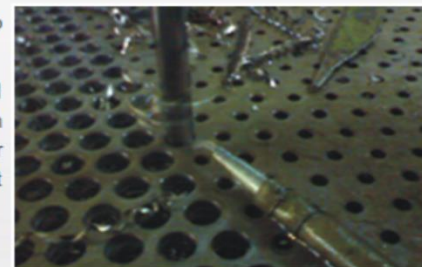
## Perforated Plates/ Heavy Perforations:

- > Plates over 3mm thick upto 10mm thick in SS and upto 12mm thick in MS can be punched.
- > Maximum width 2000mm x Maximum length upto 6000 mm possible. All kinds of holes viz: Round, Square, Capsule etc. can be punched. Same thickness x same hole dia. eg: 3mm thick x 3mm hole dia. upto 6mm thick x 6mm hole dia in SS can be punched.



## Drilled Plates

- > Drilling can be done upto max. thickness of 100mm. Max. width upto 3000mm x max. length upto 8000mm
- > Very heavy thickness plates that can not be punched or some very odd combinations of perforated sheets / plates such as 4mm thickness with 2mm hole diameter which are impossible to punch are drilled. Proper method adopted for drilling and then deburring to achieve the best results.



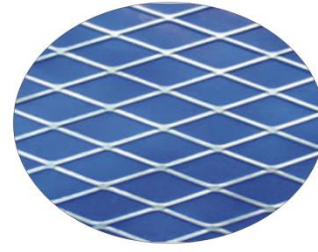
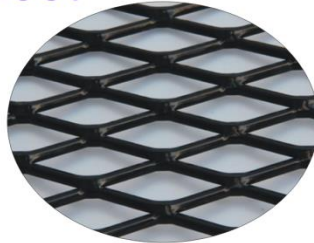
## Fine Holes

- > Applications demanding filtering of very fine products such as powders, fine materials, juices etc. can only use fine hole perforated sheets.
- > Holes ranging from 0.5mm diameter to 2mm hole diameter.



## Our Products

### Expanded Metal Sheet



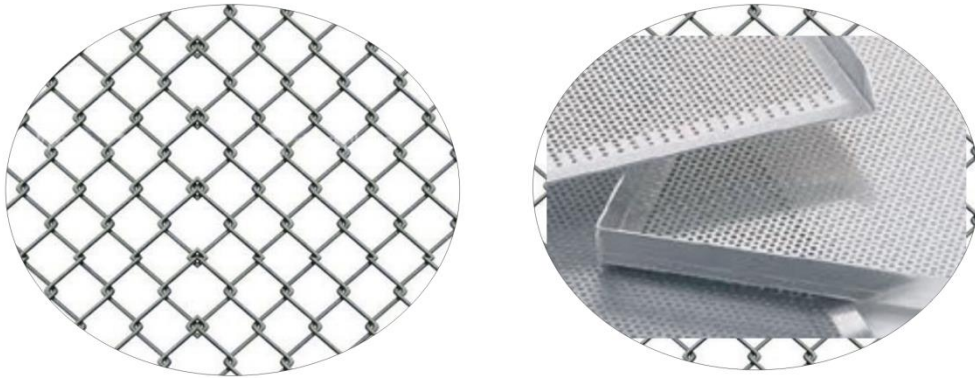
Expanded Metal is made from sheets of solid metals that all are slit and stretched with each stroke of the upper die, forming a raised diamond pattern. This pattern is called regular or standard. This pattern varies by the gauge and type of material and the size of the diamond. The sheets can also be flattened by rollers for an optional style by passing them through a cold, roll reducing mill. Expanded metal also can be manufactured in heavy gauges for applications such as walkways, ramps, and catwalks of all types. Frequently, the heavier gratings and catwalks are used in industrial plants for flooring and stair treads.

#### **Expanded metal is used in:**

- ▶ grates,
- ▶ in outdoor furniture (e.g. benches),
- ▶ fencing,
- ▶ installation of "heating floor" system;
- ▶ plastering (metal lath).[2]
- ▶ It is often used for guarding to prevent contact with hot surfaces or machinery.
- ▶ Expanded metal is often used for architectural details and finds use in security applications such as in the walls of a Sensitive Compartmented Information Facility because, in heavier grades, it is difficult to breach without heavy cutting equipment or explosives.



# Wire Mesh



A mesh is a barrier made of connected strands of metal, fiber, or other flexible/ductile materials. A mesh is similar to a web or a net in that it has many attached or woven strands

## Types of mesh

1. A plastic mesh may be extruded, oriented, expanded, woven or tubular.
2. It can be made from polypropylene, polyethylene, nylon, PVC or PTFE.
3. A metal mesh may be woven, knitted, welded, expanded, photo-chemically etched or electroformed (screen filter) from steel or other metals.
4. In clothing, a mesh is often defined as a loosely woven or knitted fabric that has a large number of closely spaced holes. Knitted mesh is frequently used for modern sports jerseys and other clothing.
5. A mesh skin graft is a skin patch that has been cut systematically to create a mesh. Meshing of skin grafts provides coverage of a greater surface area at the recipient site, and also allows for the egress of serous or sanguinous fluid. However, it results in a rather pebbled appearance upon healing that may ultimately look less aesthetically pleasing.
6. appearance upon healing that may ultimately look less aesthetically pleasing.
7. Fiberglass mesh is a neatly woven, crisscross pattern of fiberglass thread that can be used to create new products such as door screens, filtration components, and reinforced adhesive tapes. It is commonly sprayed with a PVC coating to make it stronger, last longer, and to prevent skin irritation.

Mesh	S.W.G.	Diameter of Wire		Size of Opening		Approx. Percentage of Open Area
		Inches	Mill Meters	Inches	Mill Meters	
2	12	.104	2.6	.396	10.06	62.7
	13	.092	2.3	.408	10.36	66.6
	14	.80	2.0	.420	10.67	70.6
	15	.072	1.8	.428	10.87	73.3
	16	.064	1.6	.436	11.07	76.0
	17	.056	1.4	.444	11.28	78.8
	18	.048	1.2	.452	11.46	81.7
3	12	.104	2.642	.2293	5.8243	47.3
	13	.092	2.337	.2413	6.1293	52.4
	14	.080	2.032	.2533	6.4343	57.7
	15	.072	1.829	.2613	6.6373	61.4
	16	.064	1.626	.2693	6.8403	65.3
	17	.056	1.422	.2773	7.0443	69.2
	18	.048	1.219	.2853	7.2473	73.3
4	14	.080	2.032	.1700	4.3178	46.2
	15	.072	1.829	.1780	4.5208	50.7
	16	.064	1.626	.1860	4.7238	55.4
	17	.056	1.422	.1940	4.9278	60.2
	18	.048	1.219	.2020	5.1308	65.3
	19	.040	1.016	.2100	5.338	70.6
	20	.036	0.914	.2140	5.4358	73.3
5	14	.072	1.829	.12804	3.2508	41.0
	15	.064	1.626	.13604	3.4538	46.2
	16	.056	1.422	.14401	3.6578	51.8
	17	.048	1.219	.15204	3.8608	57.8
	18	.040	1.016	.16005	4.0638	64.0
	19	.036	0.914	.1640	4.1658	67.2
	20	.032	0.813	.1680	4.2668	70.6
6	16	.064	1.626	.1027	2.6072	38.0
	17	.056	1.422	.1107	2.8112	44.1
	18	.048	1.219	.1187	3.0142	50.7
	19	.040	1.016	.1267	3.2172	57.8
	20	.036	0.914	.1307	3.3192	61.5
	21	.032	0.813	.1347	3.4202	65.3
	22	.028	0.711	.1387	3.5222	69.3
	23	.024	0.610	.1427	3.6263	73.3
	24	.022	0.559	.1447	3.6742	75.4
7	16	.064*	1.626	.0789	2.0024	30.5
	17	.056	1.422	.0869	2.2064	37.0
	18	.048	1.219	.0949	2.4094	44.1
	19	.040	1.016	.1029	2.6124	51.9
	20	.036	0.914	.1069	2.7144	56.0
	21	.032	0.813	.1109	2.8154	60.3
	22	.028	0.711	.1149	2.9174	64.7
	23	.024	0.610	.1189	3.0184	69.3
	24	.022	0.559	.1209	3.0694	71.6
8	18	.047	1.219	.770	1.9559	37.9
	19	.040	1.016	.850	2.1589	46.2
	20	.036	0.914	.0890	2.2609	50.7
	21	.032	0.813	.930	2.3619	55.4
	22	.028	0.711	.0970	2.4639	60.2
	23	.024	0.610	.1010	2.5649	65.3
	24	.022	0.559	.1030	2.6159	67.9
	25	.020	0.508	.1050	2.669	70.6
	26	.018	0.457	.1070	2.7179	73.3
27	.0164	0.4166	.1090	2.7583	76.0	
9	18	.048	1.219	.0631	1.6031	32.2
	19	.040	1.016	.0711	1.8061	40.8
	20	.036	0.914	.0751	1.9081	45.6
	21	.032	0.813	.0791	2.0091	50.5
	22	.028	0.711	.0831	2.1111	55.8
	23	.024	0.610	.0871	2.2121	61.3
	24	.022	0.559	.0891	2.2631	64.2
	25	.020	0.508	.0911	2.3141	67.1
	26	.018	0.457	.0931	2.3651	70.1
27	.0164	0.4166	.0951	2.4055	73.1	
28	.0148	0.3759	.0961	2.4462	74.6	
10	20	.036	0.914	.0640	1.6259	41.0
	21	.032	0.813	.0680	1.7269	46.2
	22	.028	0.911	.0720	1.8289	51.8
	23	.024	0.810	.0760	1.9299	57.8
	24	.022	0.559	.0780	1.9809	60.8
	25	.020	0.508	.0800	2.0319	64.0
	26	.018	0.457	.0800	2.0829	67.2
	27	.0165	0.416	.8036	2.1233	69.9
	28	.048	0.375	.0852	2.1640	72.6
12	20	.036	0.914	.0473	1.2026	32.2
	21	.032	0.813	.0513	1.3036	37.9
	22	.028	0.711	.0553	1.4056	44.0
	23	.024	0.610	.0593	1.5066	50.6
	24	.022	0.559	.0613	1.5576	54.1
	25	.020	0.508	.0633	1.6086	57.7
	26	.018	0.457	.0653	1.6596	61.4
	27	.0164	0.416	.0653	1.7000	64.4
	28	.0148	0.375	.0669	1.7407	67.6
	29	.0136	0.3454	.0665	1.7712	70.0
30	.0124	0.3150	.0697	1.8016	72.4	



Mesh	S.W.G.	Diameter of Wire	
		Inches	Mill Meters
14	22	.028	.711
	23	.024	.610
	24	.022	.559
	25	.020	.508
	26	.018	.457
	27	.0164	.4166
	28	.0148	.3759
	29	.0136	.3454
	30	.0124	.3150
	31	.0116	.2946
32	.0108	.2743	
16	24	.022	.559
	25	.020	.508
	26	.018	.457
	27	.0164	.4166
	28	.0148	.3759
	29	.0136	.3454
	30	.0124	.3150
	31	.0116	.2946
	32	.0108	.2743
	33	.0100	.2540
18	22	.028	.711
	23	.024	.610
	24	.022	.559
	25	.020	.508
	26	.018	.457
	27	.0164	.4166
	28	.0148	.3759
	29	.0136	.3454
	30	.0124	.3150
	31	.0116	.2946
32	.0108	.2743	
33	.0100	.2540	
20	24	.022	.559
	25	.020	.508
	26	.018	.457
	27	.0164	.4166
	28	.0148	.3759
	29	.0136	.3454
	30	.0124	.3150
	31	.0116	.2946
	32	.0108	.2743
	33	.0100	.2540
22	24	.022	.559
	25	.020	.508
	26	.018	.457
	27	.0164	.4166
	28	.0148	.3759
	29	.0136	.3454
	30	.0124	.3150
	31	.0116	.2946
	32	.0108	.2743
	33	.0100	.2540
24	24	.022	.559
	25	.020	.508
	26	.018	.457
	27	.0164	.4166
	28	.0148	.3759
	29	.0136	.3454
	30	.0124	.3150
	31	.0116	.2946
	32	.0108	.2743
	33	.0100	.2540
26	28	.0148	.3759
	29	.0136	.3454
	30	.0124	.3150
	31	.0116	.2946
	32	.0108	.2743
	33	.0100	.2540
34	.0092	.2337	
28	28	.0148	.3759
	29	.0136	.3454
	30	.0124	.3150
	31	.0116	.2946
	32	.0108	.2743
	33	.0100	.2540
34	.0092	.2337	
30	30	.0124	.3150
	31	.0116	.2946
	32	.0108	.2743
	33	.0100	.2540
	34	.0092	.2337
	35	.0084	.2134
36	.0076	.1930	
32	32	.0108	.2743
	33	.0100	.2540
	34	.0092	.2337
	35	.0084	.2134
36	.0076	.1930	

Size of Opening		Approx. Percentage of Open Area
Inches	Mill Meters	
.0434	1.1032	36.9
.0474	1.2042	44.0
.0494	1.2552	47.8
.0514	1.3062	51.8
.0534	1.3572	55.9
.0550	1.3976	59.3
.0566	1.4383	62.8
.0578	1.4688	65.5
.0590	1.4992	68.2
.0598	1.5196	70.1
.0606	1.5399	72.0
.0405	1.0285	42.0
.0425	1.0795	46.2
.0445	1.1395	50.7
.0461	1.1709	54.4
.0477	1.2116	58.3
.0489	1.2421	61.2
.0501	1.2725	64.3
.0509	1.2929	66.3
.0517	1.3132	66.4
.0525	1.3335	70.6
.0275	.7000	24.5
.0315	.8100	32.1
.0335	.8520	36.4
.0355	.9030	40.8
.0375	.9540	45.6
.0391	.9944	49.5
.0407	1.0351	53.7
.0419	1.0656	56.9
.0431	1.0960	60.2
.0440	1.1164	62.7
.0447	1.1367	64.7
.0455	1.1570	67.1
.0280	.7110	31.4
.0300	.7520	36.0
.0320	.8130	41.0
.0336	.8534	45.1
.0352	.8941	49.6
.0364	.9246	53.0
.0376	.9550	56.3
.0384	.9754	59.0
.0392	.9957	61.5
.0400	1.0610	64.0
.0235	.5955	26.7
.0255	.6455	31.5
.0275	.6975	36.6
.0291	.7379	41.0
.0307	.7786	45.6
.0319	.8091	49.2
.0331	.8395	53.0
.0338	.8599	55.3
.0347	.8802	58.3
.0355	.9005	61.0
.196	.4993	22.1
.0216	.5503	26.9
.0236	.6013	32.1
.0252	.6417	36.6
.0268	.6824	41.4
.0280	.7129	45.2
.0292	.7433	49.1
.0300	.7637	51.8
.0308	.7840	54.6
.0316	.8043	57.5
.0237	.6010	38.0
.0249	.6315	41.9
.0261	.6619	46.0
.0269	.6823	48.9
.0277	.7226	51.9
.0285	.7229	54.9
.0293	.7432	58.0
.0209	.5312	34.2
.0221	.5617	38.3
.0233	.5921	42.6
.0241	.6125	45.5
.0249	.6328	48.6
.0257	.6531	51.8
.0265	.6734	55.1
.0209	.5316	39.3
.0217	.5520	42.2
.0225	.5723	45.6
.0233	.5926	48.9
.0241	.6129	52.3
.0249	.6332	55.8
.0257	.6536	59.4
.0204	.5194	42.6
.0212	.5397	46.0
.0220	.5600	49.6
.0228	.5803	53.2
.0236	.6007	57.0



Mesh	S.W.G.	Diameter of Wire		Size of Opening		Approx. Percentage of Open Area
		Inches	Mill Meters	Inches	Mill Meters	
30	33	.0100	.2540	.0178	.4515	41.1
	34	.0092	.2337	.0186	.4718	44.8
	35	.0084	.2134	.0194	.4921	48.8
	36	.0076	.1930	.0202	.5125	52.9
40	32	.0108	.2743	.0142	.3607	32.3
	33	.0100	.2540	.0150	.3810	36.0
	34	.0092	.2337	.0158	.4013	39.9
	35	.0084	.2134	.0166	.4216	44.1
	36	.0076	.1930	.0174	.4420	48.4
	37	.0068	.1727	.0182	.4623	53.0
	38	.0060	.1524	.0190	.4826	57.8
50	33	.0100	.2540	.0100	.2550	25.0
	34	.0092	.2337	.0108	.2743	29.2
	35	.0084	.2134	.0116	.2946	33.6
	36	.0076	.1930	.0124	.3150	38.4
	37	.0068	.1727	.0132	.3352	43.6
	38	.0060	.1524	.0140	.3556	49.0
	39	.0052	.1321	.0148	.3759	54.8
60	35	.0084	.2134	.0083	.2099	24.8
	36	.0076	.1930	.0091	.2303	29.8
	37	.0068	.1727	.0099	.2506	35.3
	38	.0060	.1524	.0107	.2709	41.2
	39	.0052	.1321	.0115	.2912	47.6
70	36	.0076	.1930	.0067	.1698	22.0
	37	.0068	.1727	.0075	.1901	27.6
	38	.0060	.1524	.0083	.2104	33.8
	39	.0052	.1321	.0091	.2307	40.6
	40	.0044	.1219	.0095	.2409	44.2
80	37	.0068	.1727	.0057	.1448	20.8
	38	.0060	.1524	.0065	.1651	27.0
	39	.0052	.1321	.0073	.1854	34.1
	40	.0044	.1219	.0077	.1956	37.9
	41	.0044	.1118	.0081	.2057	42.0
90	39	.0052	.1321	.0059	.1501	28.2
	40	.0044	.1219	.0063	.1603	32.1
	41	.0044	.1118	.0067	.1704	36.4
	42	.0040	.1016	.0069	.1806	38.6
	43	.0036	.0914	.0075	.1908	45.6
100	39	.0052	.1321	.0048	.1219	23.0
	40	.0044	.1219	.0052	.1321	27.0
	41	.0044	.1118	.0056	.1422	31.4
	42	.0040	.1016	.0069	.1524	36.0
	43	.0036	.0914	.0064	.1626	41.0
110	41	.0044	.1118	.0047	.1173	26.7
	42	.0040	.1016	.0051	.1293	31.5
	43	.0036	.0914	.0055	.1395	36.6
	44	.0032	.0813	.0059	.1496	42.1
	45	.0028	.0711	.0063	.1598	48.0
120	42	.0040	.1016	.0043	.1101	26.6
	43	.0036	.0914	.0047	.1203	31.8
	44	.0032	.0813	.0051	.1304	37.5
	45	.0028	.0711	.0055	.1406	43.6
	130	42	.0040	.1016	.0037	.0938
43		.0036	.0914	.0041	.1040	28.4
44		.0032	.0813	.0045	.1141	34.2
45		.0028	.0711	.0049	.1243	40.6
140		43	.0036	.0914	.0035	.0900
	44	.0032	.0813	.0039	.1001	29.8
	45	.0028	.0711	.0043	.1103	36.2
	46	.0024	.0610	.0047	.1204	43.3
	160	45	.0028	.711	.0034	.0876
46		.0024	.0610	.0038	.0977	37.0
47		.0020	.0508	.0042	.1079	45.2
180	46	.0024	.610	.0032	.801	33.0
	47	.0020	.508	.0036	.903	37.0
200	47	.0020	.508	.0030	.762	42.2
	47	.0016	.0406	.0034	.864	46.2
250	48	.0016	.0406	.0024	.0010	36.0
	49	.0012	.0305	.0028	.0711	49.0
300	48	.0016	.0406	.0017	.0432	26.5
	49	.0012	.0305	.0021	.0542	40.5
350	49	.0012	.0305	.0017	.0421	34.4
	50	.0010	.0254	.0019	.0472	43.0
400	49	.0012	.0305	.0013	.0330	27.0
	50	.0010	.0254	.0015	.0381	36.0

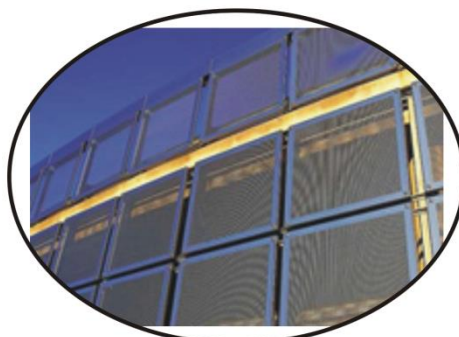
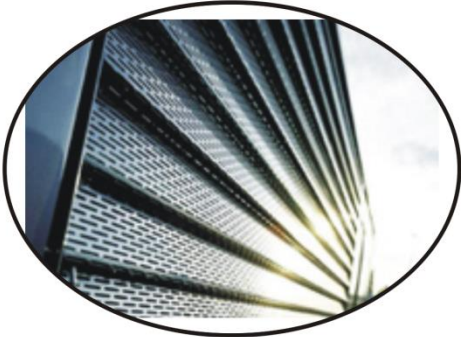


# Application



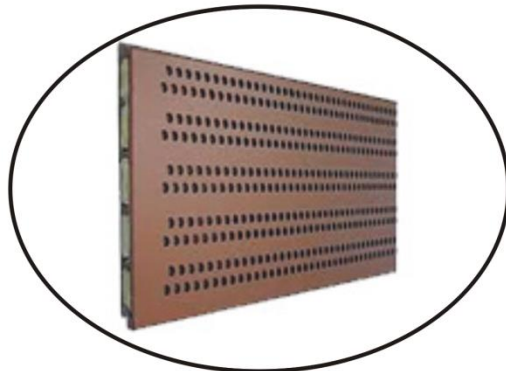
## Construction & Architectural

Perforated Sheets are widely used for construction as well as architectural purposes. Insulation, Building Facades, Protective exterior panels, Ducting, etc. are some of the major applications.



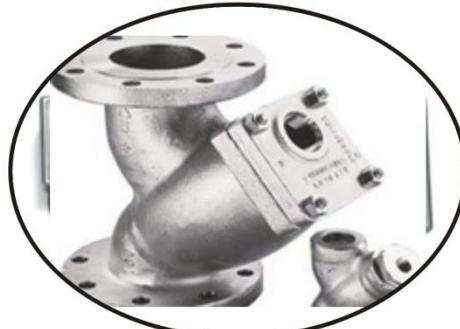
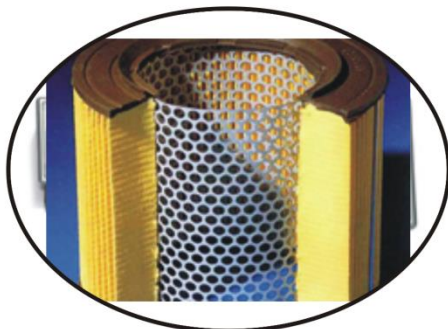
## Acoustics & Sound Control

With its capacity to break down sound decibels to a good extent Perforated Sheets are used for manufacturing industrial as well as commercial acoustic systems such as Diesel Gensets, Loudspeakers, Heavy Duty Engines etc.



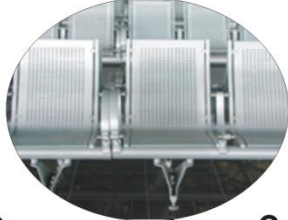
## Filters & Screens

Almost all kind of Filters & Strainers, various kinds of screens, Clean Room systems, all use Perforated Sheets as their main raw material.



## Furniture & Accessories

Today Metal Perforated Sheets are widely used to make different kind of interior as well as exterior furniture such as chairs, benches, exterior panels, partition panels, shutters, facades, dustbins, kitchen baskets, cutlery products etc and many more. 'Perfo Designs' by Superfit encourages designers to think more vibrantly on the use of Perforated products in furniture making



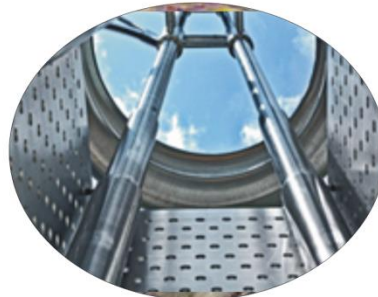
## Food Processing & Pharma

Many different type of machinery spares and accessories for food processing and pharma machines are made from Perforated Sheets.



## Fabrication & Engg

Perforated Metal products have been extensively used in Fabrication & Engg jobs, may it be Industrial, Commercial, Civil, Architectural or so, as and how it demands.



## Automotive Washing Machines

Protective automotive engine grills and other automotive parts are made from Perforated Sheets.







**Manufacturer and Supplier of**  
Perforated Sheet, Wire, Meshes, G.I/S.S Wire Crimped  
Mesh, Chain Link (Fencing) & Expanded Metal , C.R  
S.S Aluminum, G.P, H.R & M.S Sheets

**SHREE SHYAM**  
**PERFORATORS**

Gat No.50, Bajaj Road, Dehu-Alandi Road, Opp. Bharat Comp.  
Weigh Bridge, Talawade, Tal. Haveli, Dist. Pune - 411 062.

**Mob.:** 9370029298 / 9834623362  
E-mail : [prathvirajjangid@gmail.com](mailto:prathvirajjangid@gmail.com)  
Web : [www.shreeshyamperforators.com](http://www.shreeshyamperforators.com)